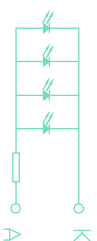


PIN	NAME	1	2	3	4	5	6	7	8-15	16	17	18	19	20	21	22	23	24	25	26	27	28	29	30	31	32	33	34	35	36
NC	NC	NC	CS1	RES	AO	WR	RD	DO-DT	VDD	VSS	VOULT	CAP3+	CAP1-	CAP1+	CAP2+	CAP2-	NC	V1	V2	V3	V4	VO	VR	NC	PS	IRS	NC	C86	NC	

Specification:

- 1) Driving: Duty: 1/65, Bias:1/9, Vop:8.3V
- 2) Viewing angle: 6 0'clock
- 3) Display mode: STN/Blue/Negative/Transmissive
- 4) Operating temp.: -20°C~+70°C  
Storage temp.: -30°C~+80°C
- 5) IC: ST7565R
- 6) Backlight: LED White

LED CIRCUIT DIAGRAM



# HOT DISPLAY

Dwg Title HTG12864-61B

Dwg No.

Date 2009-9-23

Scale

Unit

mm

Tol.

±0.2

Drawn

DDU

Checked

Approved